

Specifications

- Corridor lengths, 12, 14 and 16mm between fitting cross and near region
- Wide opening field in far region for maximum comfort and instant adaptation
- Wide and stable near region
- Range of powers is only limited by free-form machinery
- Range of cylinders is only limited by free-form machinery
- Range of additions [0.25 3.5]D in steps of 0.25
- Works with spherical blanks of any material and any refraction index
- Automatic and manual base curve selection
- Thickness optimization for frame shape
- Centre and border thickness limit defined by user
- Automatic inset calculation
- Automatic thinning prism
- Calculation time, 20s per pair
- Possibility to include prescription prism
- Possibility for lens off-centering

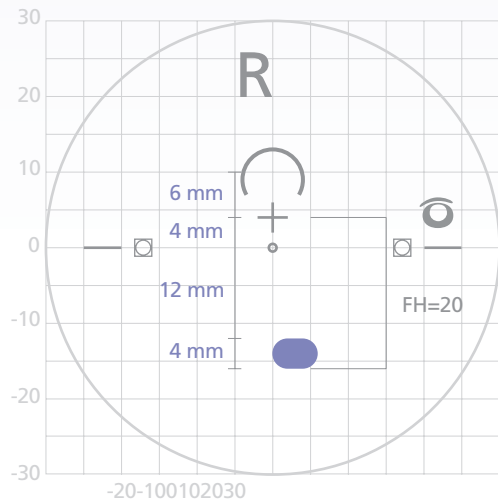
intuition

P16

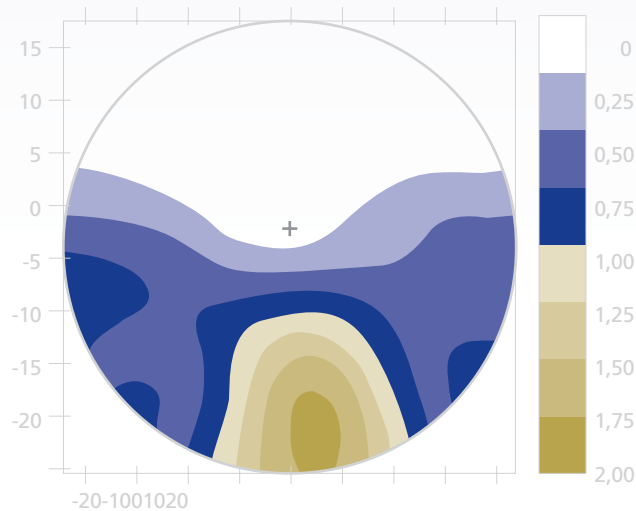
Progression length= 16mm
Minimum recommended fitting height= 20mm

Due to the longer corridor, this design is best suited for far-intermediate vision. The intermediate region is wider, but the near region is located at a lower position which slightly compromise the ergonomics for long lasting near vision tasks. It is excellent for occasional use of the near region.

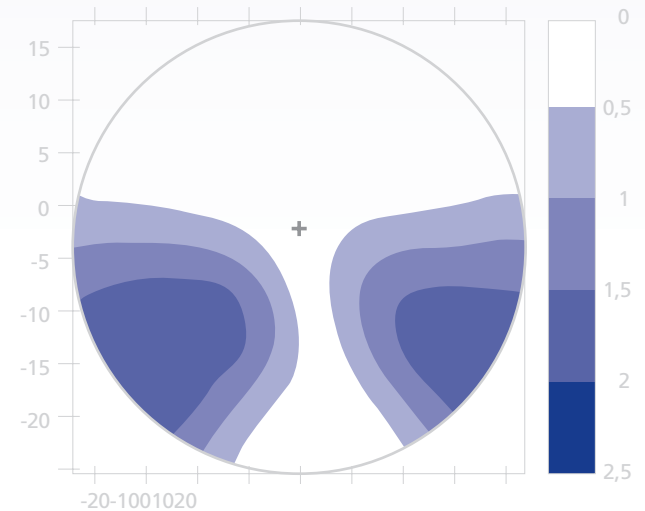
MEASURES



POWER MAP



CILINDER MAP

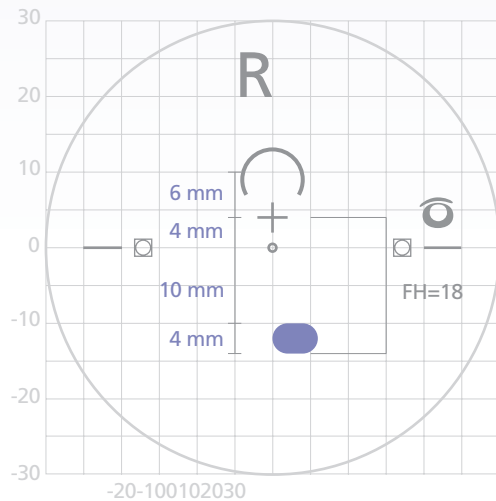


P14

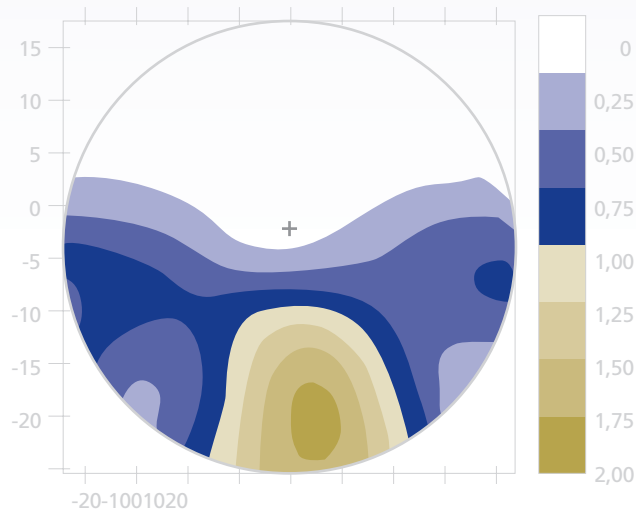
Progression length= 14mm
Minimum recommended fitting height= 18mm

This is a great progressive for generic use, with a stable reading region. This lens presents the best balanced fields of view at the far, intermediate and near region. The best choice when the wearer will use the lenses for all types of tasks.

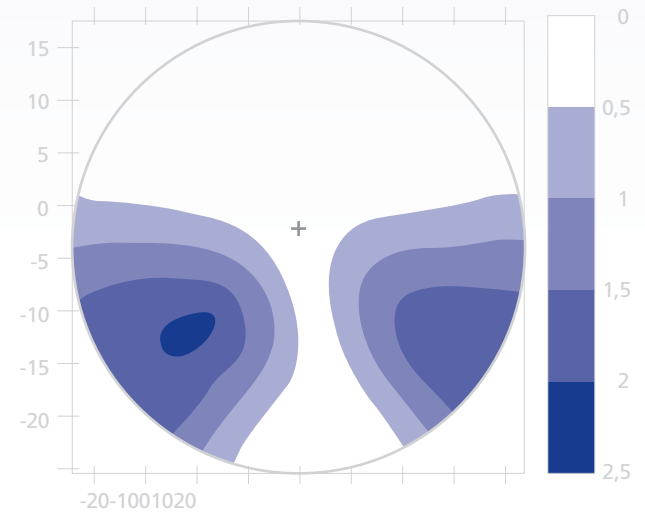
MEASURES



POWER MAP



CILINDER MAP

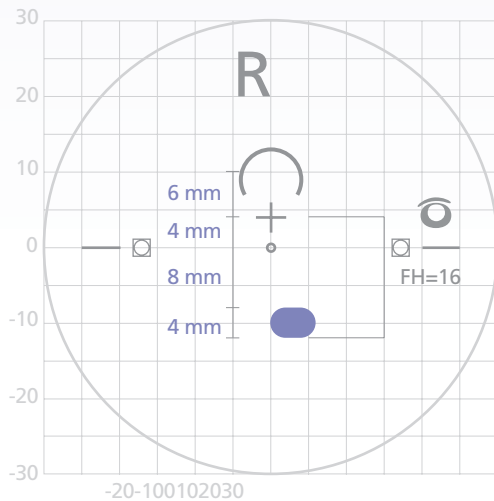


P12

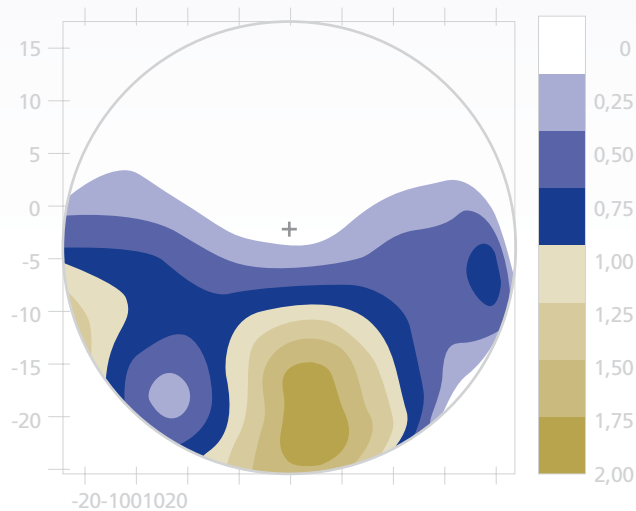
Progression length= 12mm
Minimum recommended fitting height= 16mm

Due to the shorter corridor, ergonomic head and eye position at near vision is guaranteed. A great lens for far and near, with a hard intermediate transition. This progressive lens will be the best choice when the wearer needs long-lasting use of the near region; it is a good lens for reading.

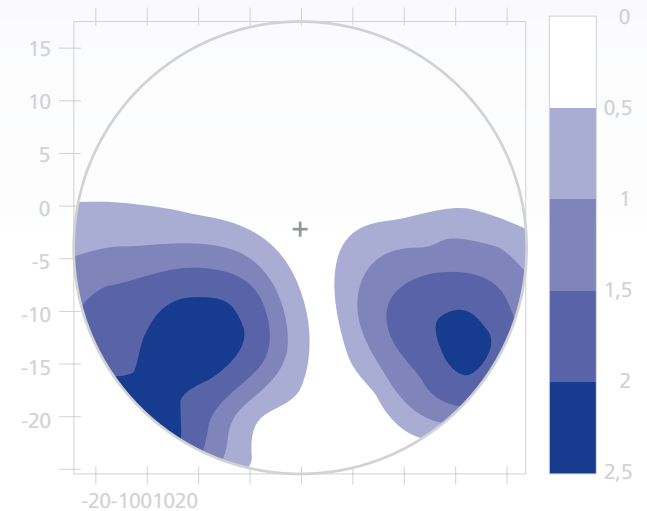
MEASURES



POWER MAP



CILINDER MAP



Specifications

- Corridor length, 10mm between fitting cross and near measurement point
- Wide opening field in far region for higher comfort and instant adaptation
- Wide and stable near region
- Range of powers is only limited by free-form machinery
- Range of cylinders is only limited by free-form machinery
- Range of additions [0.25 3.5]D in steps of 0.25 D
- Works with spherical blanks of any material and any refraction index
- Automatic and manual base curve selection
- Thickness optimization for frame shape
- Centre and border thickness limit defined by user
- Automatic inset calculation
- Automatic thinning prism
- Calculation time, 20s per pair
- Possibility to include prescription prism
- Possibility for lens off-centering

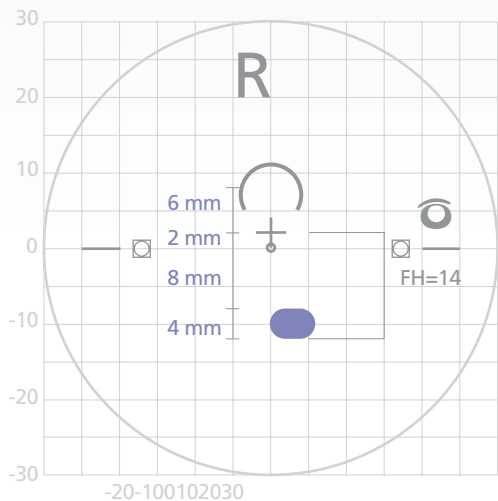
intuition

Short

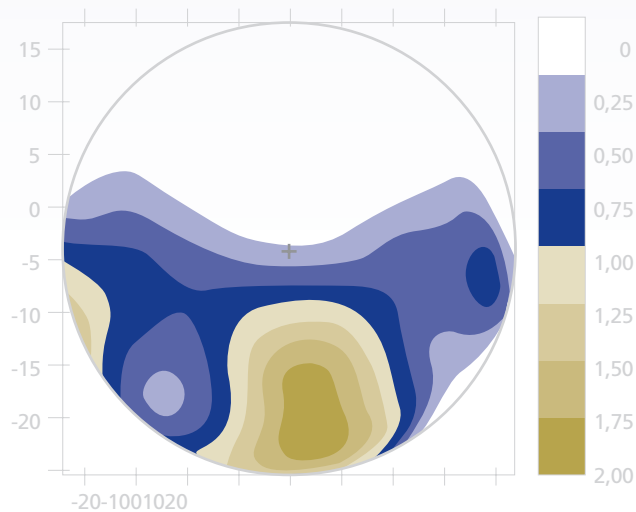
Progression length= 10mm
Minimum recommended fitting height= 14mm

Progressive lenses specially designed for short frames, with a corridor length of 10mm. This design is especially well suited for experienced users who can wear shorter frames while keeping good and stable view in the near and distance regions. It is also the design of choice when the aesthetic advantage of a shorter frame is the main factor of decision.

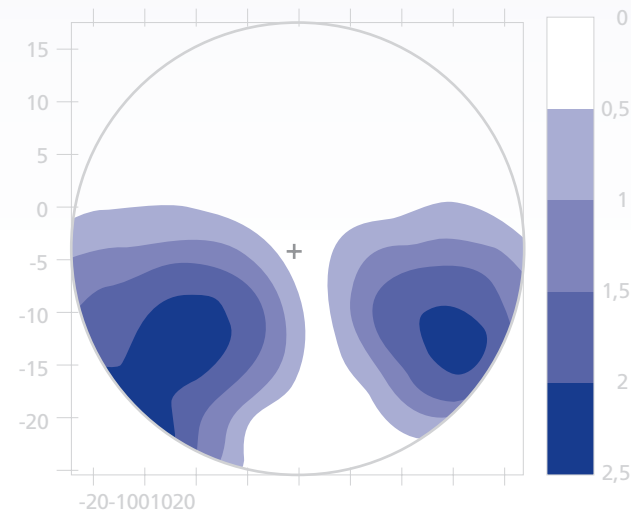
MEASURES



POWER MAP



CILINDER MAP

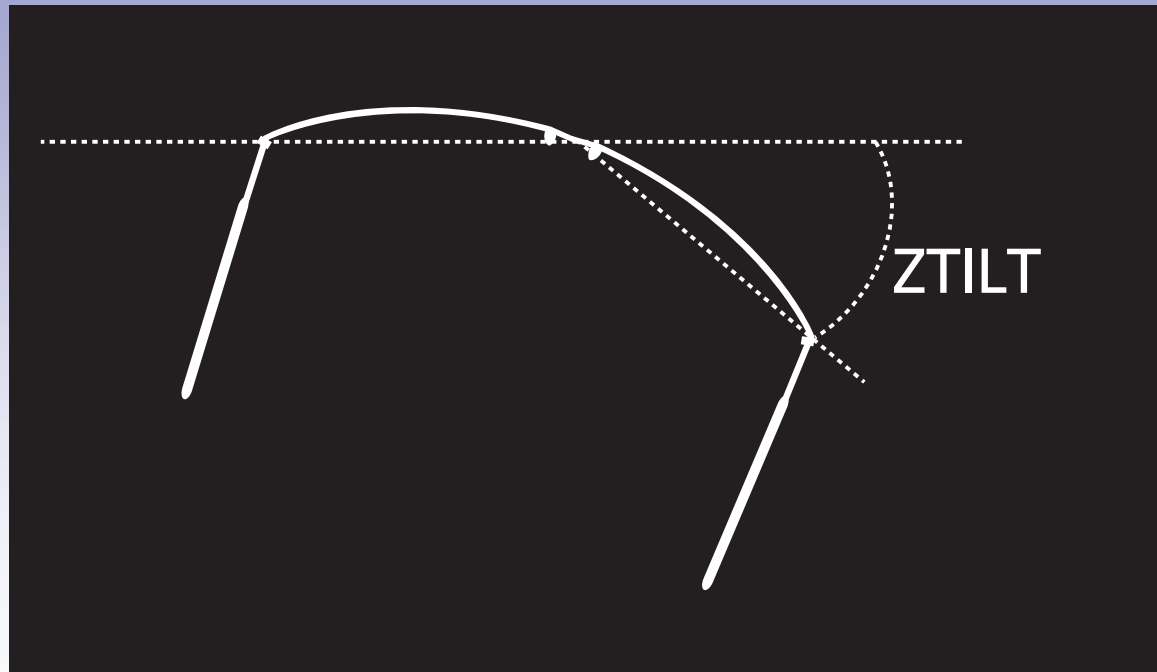
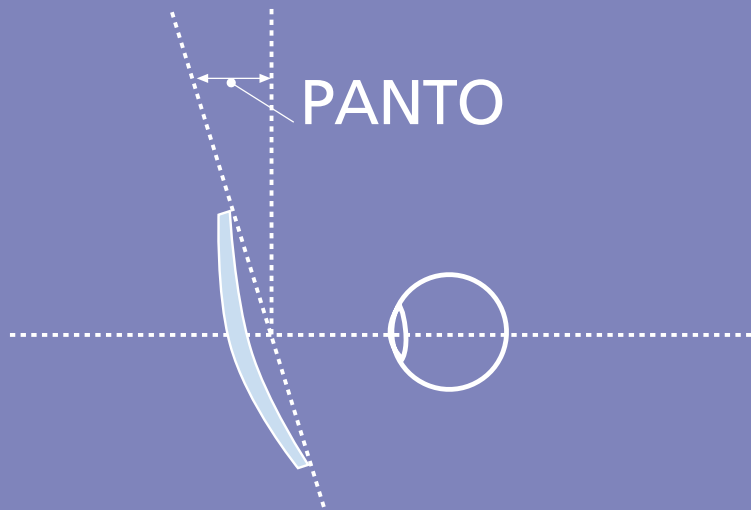




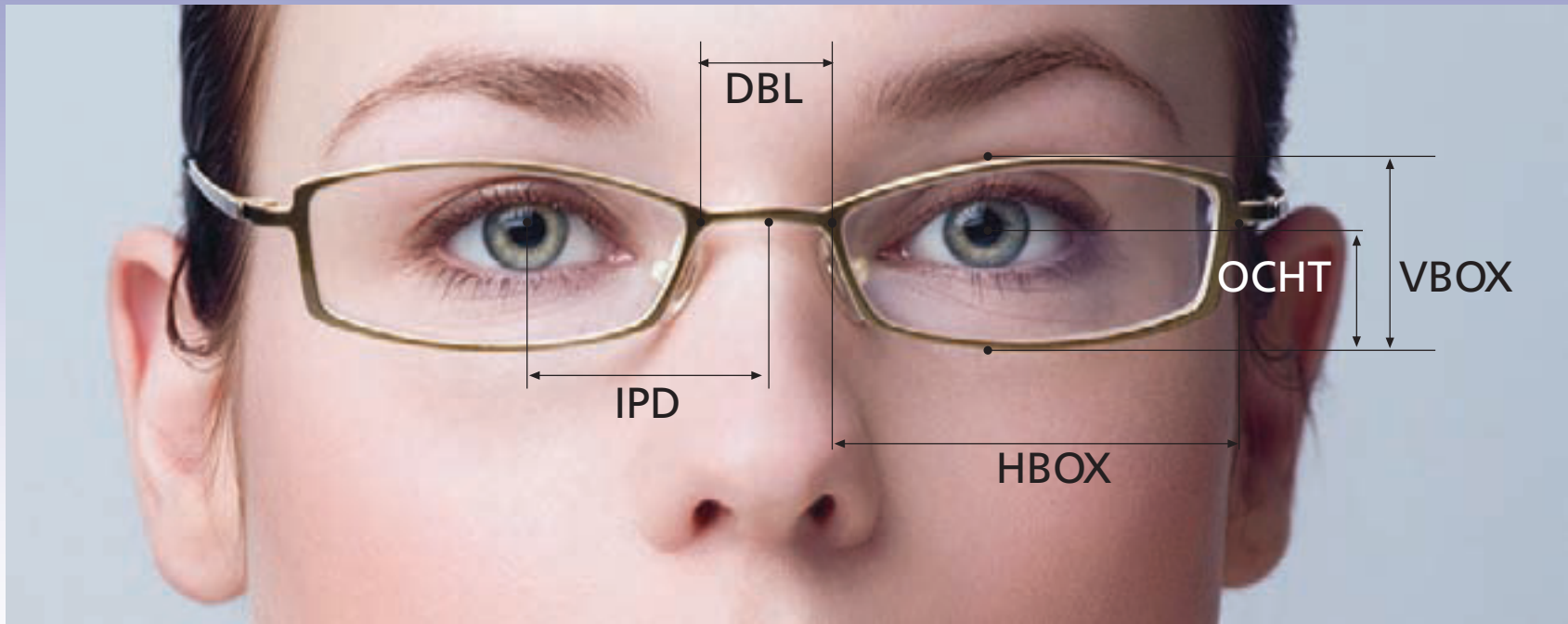
Single Vision lenses with a free-form back surface that will minimize oblique astigmatism and power error in every direction of sight. These lenses will always provide superior optical quality than classical single-vision lenses. An additional advantage is that SV free-form lenses can be made on a wide range of base curves for any prescription, while maintaining optical quality. These lenses are valid for standard frames, extra flat frames, and high curvature frames.

Specifications

- Reduction of oblique astigmatism and power errors in the whole field of view
- Good quality for curved and sport frames
- Range of powers is only limited by free-form machinery
- Range of cylinders is only limited by free-form machinery
- Works with spherical blanks of any material and any refraction index
- Automatic and manual base curve selection
- Thickness optimization for frame shape, including pantoscopic and wrapping angle
- Centre and border thickness limit defined by user
- Calculation time, 10s per pair
- Possibility to include prescription prism
- Possibility for lens off-centering



- IPD - Monocular Centration Distance
- OCHT - Vertical P.R.P. height measured from the lower boxed tangent
- HBOX - Horizontal Boxed Lens Size of Frame
- DBL - Distance Between Lenses
- VBOX - Vertical Boxed Lens Size
- PANTO - Pantoscopic Angle
- ZTILT - Wrapping angle



Calculation

Parameters

intuition

Off-centering

Off centering is a technique that lets you cut larger lenses from standard blanks. Intuition proprietary off-centering techniques manage to preserve the quality of the optical design, without other limitation for offset than the physical size of the blank, frame box sizes and pupillary distances. Free-Form Designer provides you with the necessary outputs for positioning the laser marks. This means that the final customers will find the lenses perfectly adapted because of the correct frame assembly.

Off-centering is especially useful for large diameter lenses and large base lenses, normally used for sport frames and sunglasses.

It is also very convenient for positive lenses.

